

Watchung Borough Public Schools

Testing Report 2016-2017 School Year

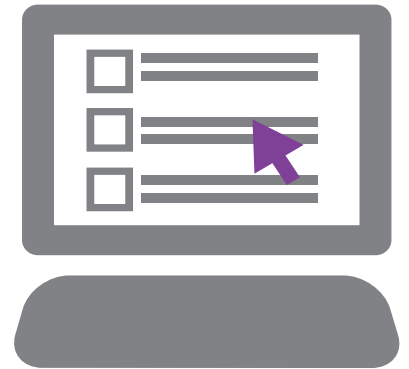
November 15, 2017

New Jersey Statewide Assessment Program

- ✓ Spring 2017 – 3rd Administration of PARCC assessments
- ✓ Spring 2017 – 1 Administration Window
 - Any 3 year comparison should recognize the 2015 test occurred in two windows: Performance Based Assessment and End of Year Assessment.
- ✓ PARCC ELA – Administered to all students in grades 3-8
- ✓ PARCC Math – Administered to all students in grades 3-8, including Algebra 1, and Geometry as required by course rosters.

Technology

- ✓ In Watchung, students took the PARCC assessments on Chromebooks.
- ✓ The technology is engaging, as it includes videos and interactive tools.
- ✓ PARCC is using Universal Design principles to make the new tests as accessible as possible to all students, including English learners and students with disabilities.



Five Performance Levels

PARCC uses five performance levels that delineate the knowledge, skills, and practices students are able to demonstrate:

Level 1:
Did Not Yet
Meet
Expectations

Level 2:
Partially Met
Expectations

Level 3:
Approached
Expectations

Level 4:
Met
Expectations

Level 5:
Exceeded
Expectations

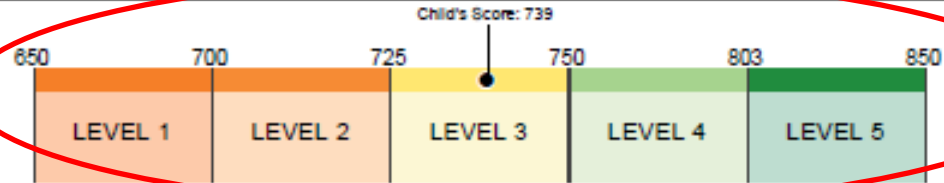
Sample English Language Arts Report

ENGLISH LANGUAGE ARTS / LITERACY PERFORMANCE

Level 3

Your child performed at Level 3 and earned a score of 739

Students performing at levels 4 and 5 met or exceeded expectations. For a description of each performance level, see page 2.



School average	District average	State average	PARCC average
741	765	745	739

READING

Reading score range: 10 to 90	Average of students just meeting expectations 50	School average 52
Your child's score 44	District average 48	State average 45

WRITING

Writing score range: 10 to 60	Average of students just meeting expectations 35	School average 39
Your child's score 30	District average 35	State average 31

COMPARISON OF WATCHUNG SCHOOL DISTRICT'S SPRING 2015, SPRING 2016, & SPRING 2017
PARCC ADMINISTRATIONS
ENGLISH LANGUAGE ARTS/LITERACY - PERCENTAGES

	Not Yet Meeting Expectations (Level 1)			Partially Meeting Expectation (Level 2)			Approaching Expectations (Level 3)			Meeting Expectations (Level 4)			Exceeding Expectations (Level 5)			Change In Level 1 and 2	Change in Level 4 and 5
	2015	2016	2017	2015	2016	2017	2015	2016	2017	2015	2016	2017	2015	2016	2017		
3	0.0	0.0	0.0	10.1	6.5	4.8	18.8	23.9	21.0	62.3	58.7	56.5	8.7	10.9	17.7	-1.7	+4.6
4	1.6	0.0	0.0	0.0	0.0	1.1	21.0	21.4	9.9	56.5	65.7	52.7	21.0	12.9	26.3	+1.1	+0.4
5	0.0	0.0	0.0	4.3	6.9	5.8	18.3	29.2	20.3	69.9	56.9	59.4	7.5	6.9	14.5	-1.1	+10.1
6	1.3	3.2	1.3	6.5	14.9	9.3	14.3	17.0	16.0	58.4	47.9	61.3	19.5	17.0	12.0	-7.5	+8.4
7	1.4	3.9	8.2	1.4	7.8	6.2	10.8	9.1	18.6	52.7	39.0	41.2	33.8	40.3	25.8	+2.7	-12.3
8	1.4	1.4	3.7	1.4	2.8	7.3	21.4	14.1	15.9	47.1	52.1	40.2	28.6	29.6	32.9	+6.8	-8.6

Percentage of Students meeting and exceeding expectations in English Language Arts in 2017

ELA – Spring 2017	> or = to levels 4 and 5
Grade 3	74.2%
Grade 4	79.0%
Grade 5	73.9%
Grade 6	73.3%
Grade 7	67.0%
Grade 8	73.1%

District Summary Comparison with State and Cross State English Language Arts Average Overall Score

Grade	District	State	Cross State
3	772- 776	749	738
4	767- 781	753	742
5	760- 767	753	743
6	758- 762	752	741
7	775- 762	756	743
8	778- 773	757	742

**COMPARISON OF WATCHUNG SCHOOL DISTRICT'S SPRING 2017
PARCC ADMINISTRATION
ENGLISH LANGUAGE ARTS/LITERACY to NEW JERSEY PERCENTAGES**

	Not Yet Meeting Expectations Level 1		Partially Meeting Expectations Level 2		Approaching Expectations Level 3		Meeting Expectations Level 4		Exceeding Expectations Level 5	
	DISTRICT	STATE	DISTRICT	STATE	DISTRICT	STATE	DISTRICT	STATE	DISTRICT	STATE
	2017	2017	2017	2017	2017	2017	2017	2017	2017	2017
3	0	12.7	4.8	14.4	21.0	22.5	56.5	42.9	17.7	7.5
4	0	7.7	1.1	12.8	9.9	23.7	52.7	40.5	36.3	15.3
5	0	6.8	5.8	12.2	20.3	22.1	59.4	48.2	14.5	10.7
6	1.3	6.5	9.3	14.6	16.0	25.6	61.3	41.0	12.0	12.3
7	8.2	8.9	6.2	11.4	18.6	20.5	41.2	35.4	25.8	23.8
8	3.7	9.0	7.3	11.6	15.9	20.3	40.2	40.5	32.9	18.6

COMPARISON OF WATCHUNG SCHOOL DISTRICT'S SPRING 2015, SPRING 2016, & SPRING 2017
PARCC ADMINISTRATIONS
MATH- PERCENTAGES

	Not Yet Meeting Expectations Level 1			Partially Meeting Expectations Level 2			Approaching Expectations Level 3			Meeting Expectations Level 4			Exceeding Expectations Level 5			Change in Levels 1 and 2	Change in Levels 4 and 5
	2015	2016	2017	2015	2016	2017	2015	2016	2017	2015	2016	2017	2015	2016	2017		
3	0.0	1.1	0.0	2.9	6.5	6.5	30.4	22.6	17.7	55.1	47.3	48.4	11.6	22.6	27.4	-1.1	+5.9
4	0.0	1.4	0.0	4.7	9.9	8.7	29.7	33.8	29.3	64.1	46.5	55.4	1.6	8.5	6.5	-2.6	+6.9
5	2.2	0.0	2.9	14.0	6.8	11.6	19.4	24.7	26.1	58.1	56.2	53.6	6.5	12.3	5.8	+7.7	-9.1
6	0.0	4.3	2.6	10.3	14.0	7.8	26.9	22.6	29.9	47.4	50.5	45.5	15.4	8.6	14.3	-7.9	+0.7
7	1.4	4.2	10.5	5.8	11.1	10.5	30.4	27.8	20.0	55.1	43.1	47.4	7.2	13.9	11.6	+5.7	+2.0
8	27.8	23.5	21.2	44.4	11.8	18.2	27.8	47.1	39.4	0.0	17.6	18.2	0.0	0.0	3.0	+4.1	+3.6

COMPARISON OF WATCHUNG SCHOOL DISTRICT'S SPRING 2015, SPRING 2016, & SPRING 2017
PARCC ADMINISTRATIONS
MATH- PERCENTAGES

	Not Yet Meeting Expectations Level 1			Partially Meeting Expectations Level 2			Approaching Expectations Level 3			Meeting Expectations Level 4			Exceeding Expectations Level 5			Change In Level 1 and 2	Change in Level 4 and 5
	2015	2016	2017	2015	2016	2017	2015	2016	2017	2015	2016	2017	2015	2016	2017		
Alg. 1	0.0	0.0	0.0	7.4	0.0	2.3	14.8	16.4	16.3	66.7	72.7	67.4	11.1	10.9	14.0	+2.3	-2.2
Geo	0.0	0.0	0.0	0.0	0.0	0.0	0.0	16.7	0.0	66.7	83.8	11.1	33.3	0.0	88.9	+/- 0.0	+ 16.2

Percentage of Students meeting and exceeding expectations in Math in 2017

Math – Spring 2016	> or = to levels 4 and 5
Grade 3	75.8%
Grade 4	62.0%
Grade 5	59.4%
Grade 6	59.7%
Grade 7	58.9%
Grade 8	21.2%
Algebra 1	81.4%
Geometry	100%

District Summary Comparison with State and Cross State Mathematics Average Overall Score

Grade	District	State	Cross State
3	768- 769	751	742
4	756- 758	747	737
5	762- 754	747	737
6	751- 757	743	734
7	754- 750	741	734
8	726- 724	728	725
Algebra 1	774- 775	743	738
Geometry	800	734	735

**COMPARISON OF WATCHUNG SCHOOL DISTRICT'S SPRING 2017
PARCC ADMINISTRATION
MATHEMATICS to NEW JERSEY PERCENTAGES**

	Not Yet Meeting Expectations Level 1		Partially Meeting Expectations Level 2		Approaching Expectations Level 3		Meeting Expectations Level 4		Exceeding Expectations Level 5	
	DISTRICT	STATE	DISTRICT	STATE	DISTRICT	STATE	DISTRICT	STATE	DISTRICT	STATE
	2017	2017	2017	2017	2017	2017	2017	2017	2017	2017
3	0	7.8	6.5	14.6	17.7	25.1	48.4	38.7	27.4	13.7
4	0	8.1	8.7	17.5	29.3	27.1	55.4	40.6	6.5	6.7
5	0	6.8	5.8	12.2	20.3	22.1	59.4	48.2	14.5	10.7
6	2.6	9.7	7.8	19.1	29.9	27.7	45.5	35.0	14.3	8.6
7	10.5	8.0	10.5	19.9	20.0	32.4	47.4	33.9	11.6	5.7
8	21.2	22.9	18.2	21.4	39.4	28.0	18.2	26.9	3.0	0.8
Alg	0.0	12.2	2.3	22.1	16.3	24.2	67.4	36.9	14.0	4.5
Geo	0.0	10.0	0.0	29.0	0.0	31.3	11.1	25.8	88.9	4.0

Moving Forward with PARCC Data

- PARCC Evidence Statements
- Provide resources and support as needed to meet the needs of all students
- Identify strengths and gaps in our curriculum and instruction:
- Improved Language Arts scores using Units of Study for Reading and Writing
- Will initiate discussions to increase the amount of math time per week

New Jersey ASK

Grade 4

2013 -2017

Year	2012-2013	2013-2014	2014-2015	2015-2016	2016-2017
Number of Students	78	95	66	71	92
Science					
Advanced	65.4%	67.0%	59.1%	80.3%	68.5%
Proficient	34.6%	28.7%	40.9%	19.7%	31.5%
Partially Proficient	0.0%	4.3%	0.0%	0.0%	0.0%
Scale Score Mean	257.7	255.7	251.2	262.8	259.3

New Jersey ASK

Grade 8

2013-2017

Year	2012-2013	2013-2014	2014-2015	2015-2016	2016-2017
Number of Students	87	84	75	73	88
Science					
Advanced	51.7%	51.9%	26.7%	46.6%	43.2%
Proficient	41.4%	44.4%	65.3%	50.7%	40.9%
Partially Proficient	6.9%	3.7%	8.0%	2.7%	15.9%
Scale Score Mean	246.0	247.9	229.3	245.2	235.2